

CATHWORKS™

INTEGRATING THE FFRANGIO SYSTEM INTO
CLINICAL PRACTICE



Quick, Wire- and Drug-free
3D FFR Guidance



Simple Integration
Within Your Cath Lab



Proven Benefits of Fractional Flow Reserve (FFR) for Better Patient Outcomes



Enhance Your Practice
With Advanced FFRangio Clinical Decision Tools

A photograph of two medical professionals, a woman and a man, in an operating room. They are both wearing blue scrubs, blue bouffant caps, and surgical masks. The woman is in the foreground, wearing a black protective vest over her scrubs, and is looking at a computer monitor. The man is standing behind her, also looking at the monitor. The room is dimly lit with blue overhead lights. The background shows a window with a grid pattern.

Quick, Wire- and Drug-free 3D FFR Guidance

The CathWorks FFRangio™ System is the non-invasive FFR platform that quickly and accurately delivers objective multi-vessel FFR measurements to optimize PCI decisions. This powerful CAD decision-making tool **easily integrates with your existing C-arm angiography system** without the need for invasive pressure wires or drug stimulation, making FFR practical for every case.

Powerful Technology, Impactful Information

INTRAPROCEDURAL WORKFLOW:





Simple Integration Within Your Cath Lab

The FFRangio System easily integrates within **your Cath lab**, making it an immediate asset that may simplify the FFR procedure and provide workflow benefits compared to wire-based FFR.


Non-invasive, Efficient Procedure Data Flow

- 1** **Fast, real-time results.** FFRangio transforms routine angiograms into multi-vessel physiologic and anatomic insights, providing vital information to optimize PCI decisions in minutes, faster than most wire-based FFR procedures.
- 2** **Compatible with all major C-arm angiography systems,** with options for main screen (boom) display and sending results to patient medical record/PACS.
- 3** **Cost-effective, wire-free and drug-free,** reducing risk, patient discomfort and complexity related to wire-based FFR preparation and measurements.



Get confident answers for coronary artery disease.

Find out for yourself how the CathWorks FFRangio™ System fits within your Cath lab and practice. Contact your local sales representative or visit us at cath.works/contact-us to learn more.



Proven Benefits of Fractional Flow Reserve (FFR) for Better Patient Outcomes

The FFRangio System is a **practical, efficient method** to achieve the proven benefits of FFR for PCI decision-making.

Consistent Use of FFR Shown to **Benefit Patients and Hospitals**

- 1 As proven in short- and long-term follow-up, **incorporating FFR in routine practice presents a clear opportunity to provide better patient outcomes.**

FFRangio leverages the benefits of FFR on a practical, non-invasive platform.

- 2 **Highly accurate results with broad patient/lesion applicability.** A recent pooled analysis in 588 patients demonstrated FFRangio has a high 93% diagnostic accuracy compared to traditional wire-based FFR, and results were consistent across a broad spectrum of patient and lesion subgroups.†

†Witberg, et al. J Am Coll Cardiol Intv. 2020. DOI: 10.1016/j.jcin.2019.10.045

THE FAME STUDY SHOWED:

FFR-guided PCI vs. angiography-guidance.

30% ✓ REDUCTION IN STENTS PER PATIENT*

26% ✓ RELATIVE REDUCTION IN CLINICAL EVENTS AT 1 YEAR*

14% ✓ REDUCTION IN COSTS AFTER 1 YEAR**

*Tonino et al. N Engl J Med. 2009 Jan 15; 360:213-224.

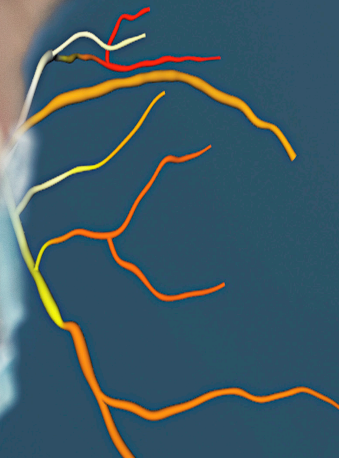
**Fearon et al. Circulation. 2010;122:2545-2550.

Explore the benefits of FFR.

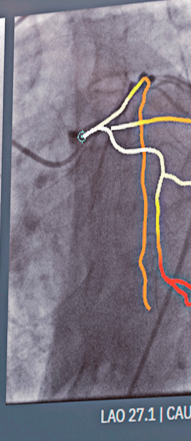
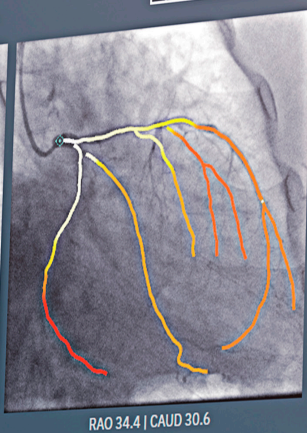
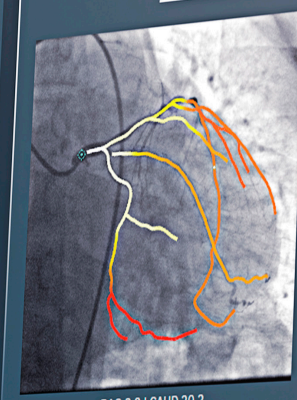
Learn why the accurate and non-invasive FFRangio System is more essential than ever for your CAD patients. Contact your local sales representative or visit us at **cath.works/contact-us** today.

Enhance Your Practice With Advanced FFRangio Clinical Decision Tools

Elevate your practice with **comprehensive physiologic and anatomic insights.**

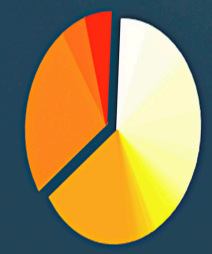


FFR PULLBACK



FFR SIZE

FFR | IMPACT



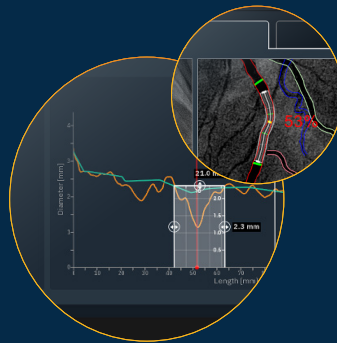
Significant Volume (≤ 0.8): 35%

FFRangio PULLBACK



Comprehensive Physiologic and Anatomic Insights

- ✓ **Interactive 3D reconstruction of the coronary tree**, color-coded by FFR value at every point.
- ✓ Multi-vessel **FFR results and multiple analyses** (e.g., right side, left side, pre-PCI, post-PCI*) at no additional cost.
- ✓ New interactive vessel sizing tool **based on 3D QCA** allows you to quickly **estimate** lesion lengths and vessel diameters for procedural planning.



* Diagnostic performance of FFRangio compared to FFR wires has not been established for lesions immediately after PCI.



Find out more.

Contact your local sales representative today or visit us at cath.works/contact-us to learn more about how the advanced insights provided by the CathWorks FFRangio™ System could impact your patients.